



PCI BIOTECH

Unlocking the potential of innovative medicines

Den store selskapskvelden

4.juni, 2019

Per Walday



PCI Biotech Holding ASA

- biotekselskap med patentert legemiddelteknologi
- liten og effektiv organisasjon: 11 ansatte
- lokalisert i Oslo Cancer Cluster Innovasjonspark
- tett samarbeid med Oslo Universitetssykehus
- fotokjemisk internalisering, fra Radiumhospitalet

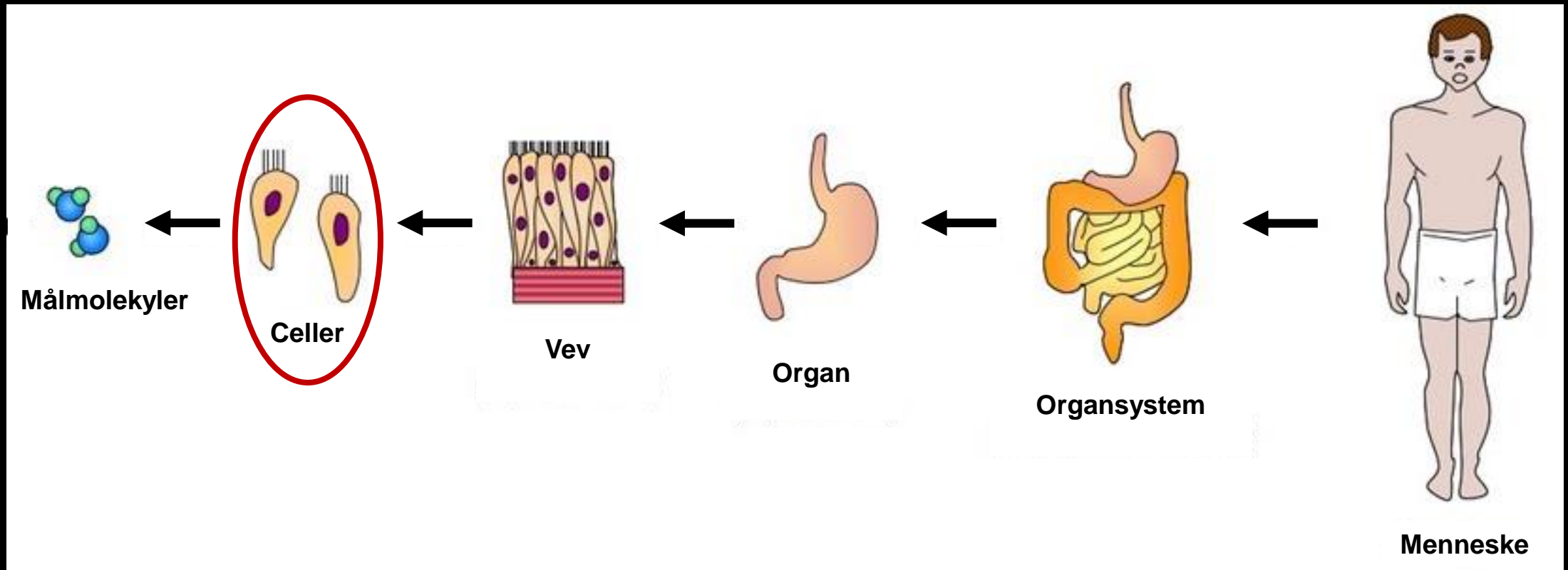
Legemiddel

molekyler designet for å interagere med målmolekyler i kroppen



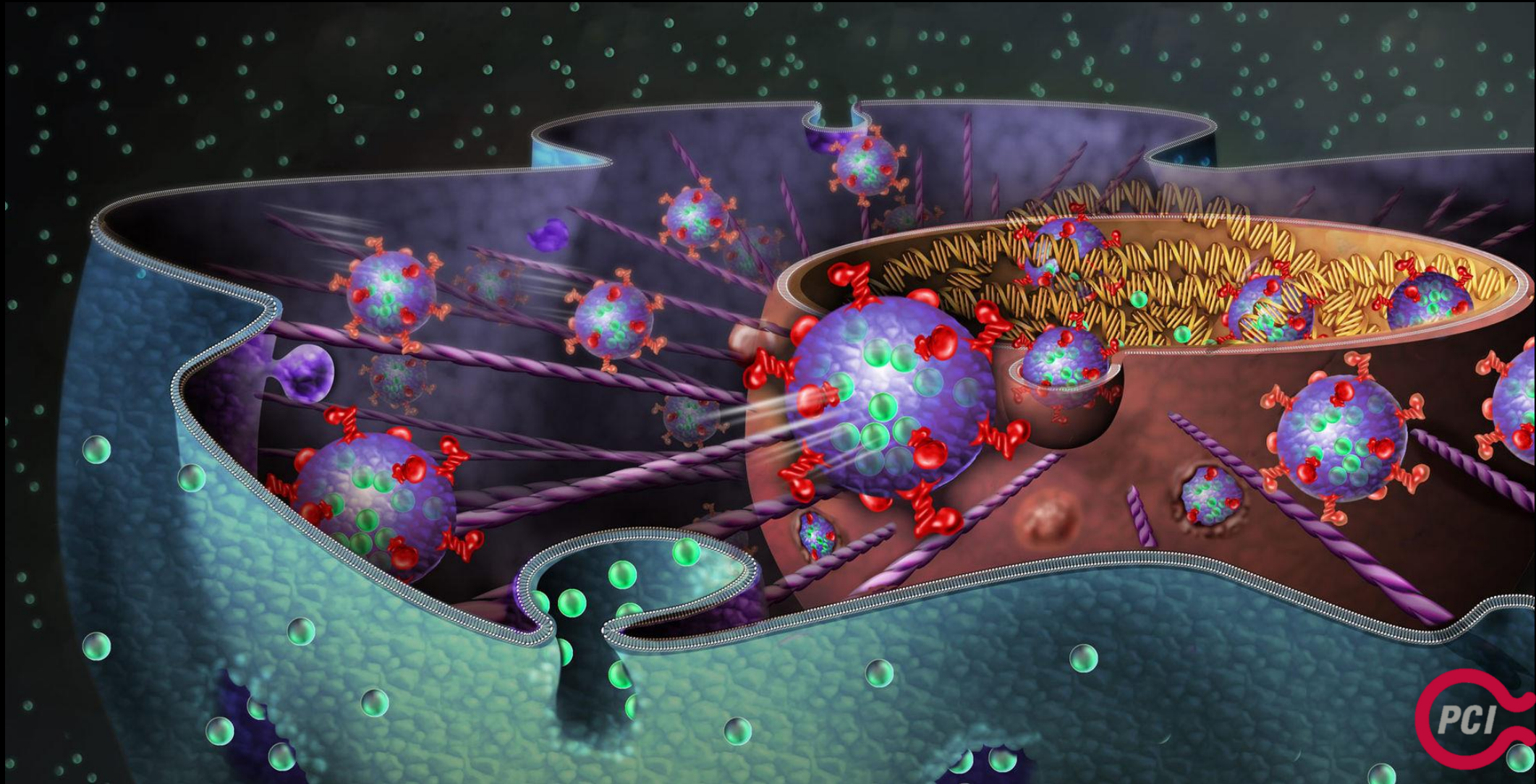
Legemiddel

må nå frem til målmolekylene i kroppen for å virke



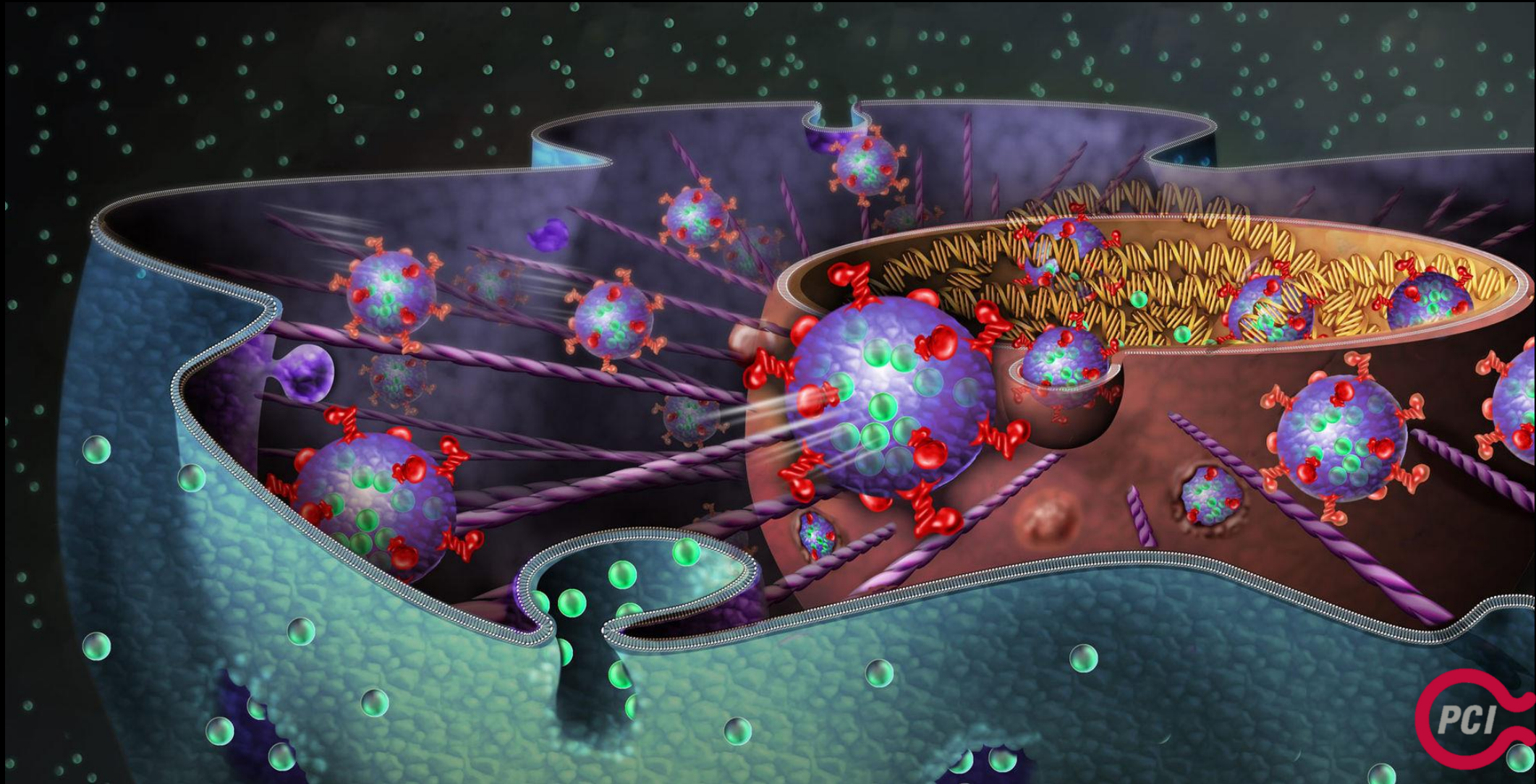
Cellmembran

cellens 'hud' som beskytter innsiden av cellen fra trusler utenfra



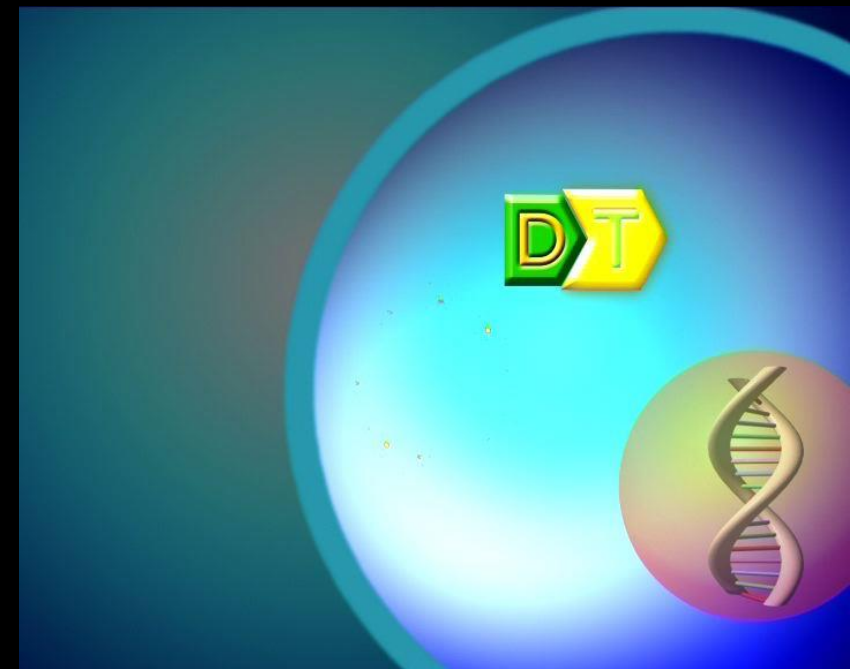
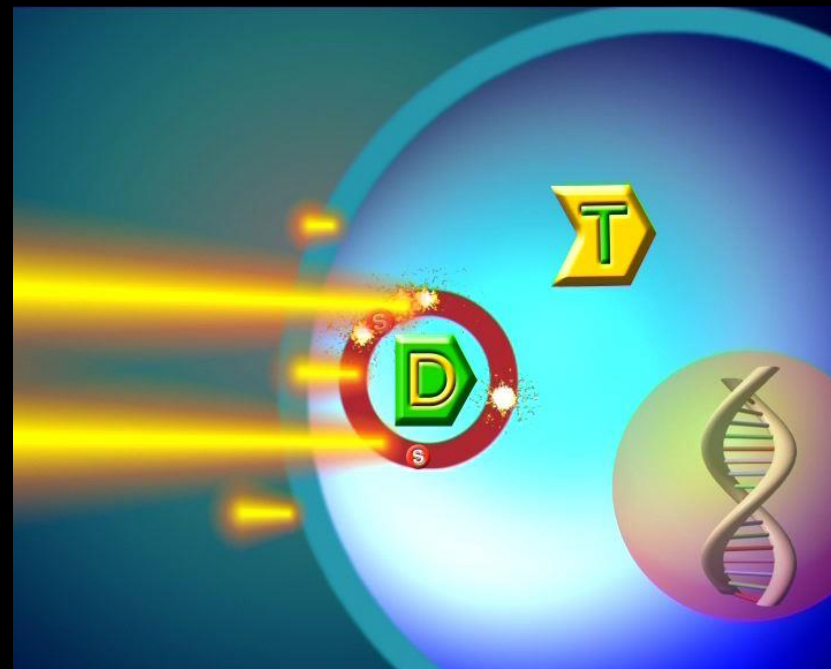
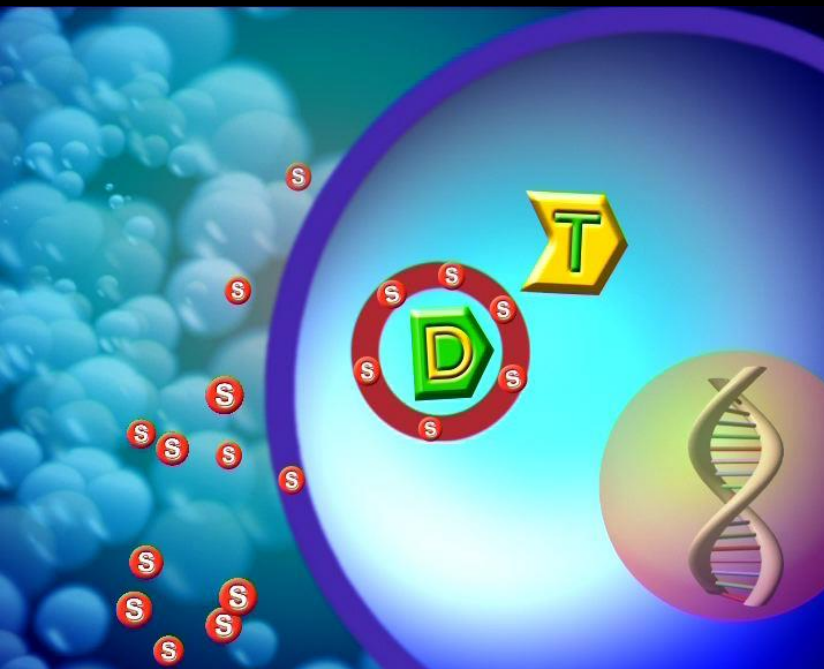
Endocytose

av gresk endon, 'inne i', kytos, 'celle', og -osis, 'tilstand'

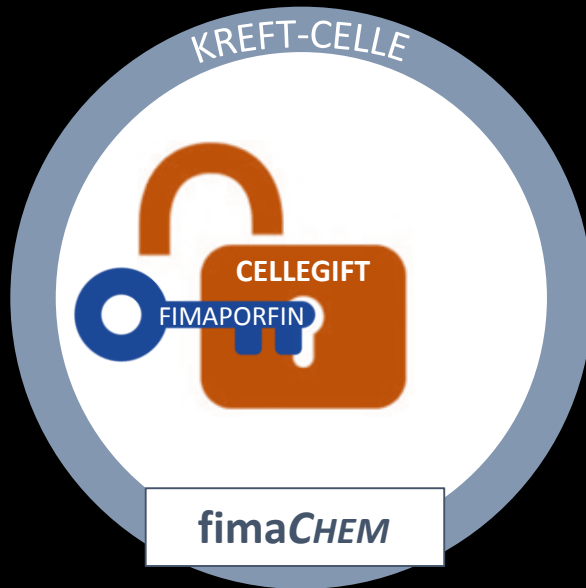


Fotokjemisk internalisering

braker lyskjemisk for å frigjøre legemidler fra endosomer



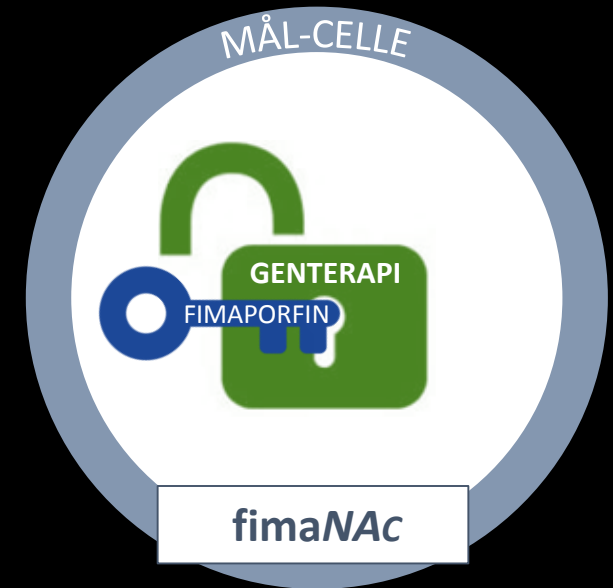
PCI – nøkkelen til effektive medisiner



Utvider eksisterende
legemidlers
mulighet å dekke
medisinske behov

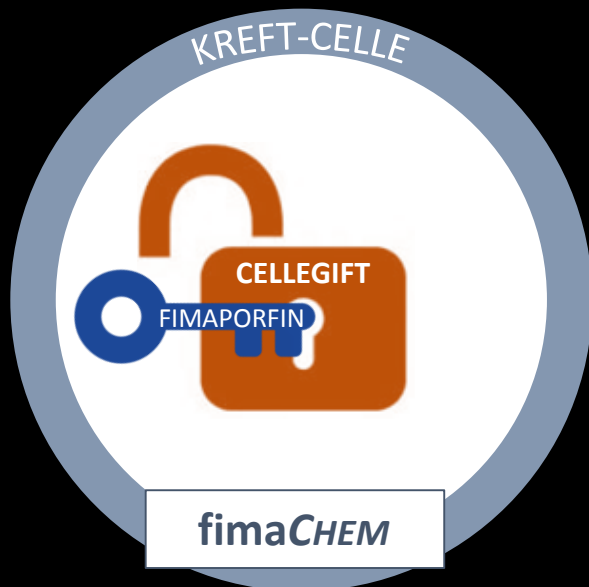


Øker effekten av
vaksiner som er
viktig ved
behandling



Effektiv lokal
leveringsløsning for
genterapier

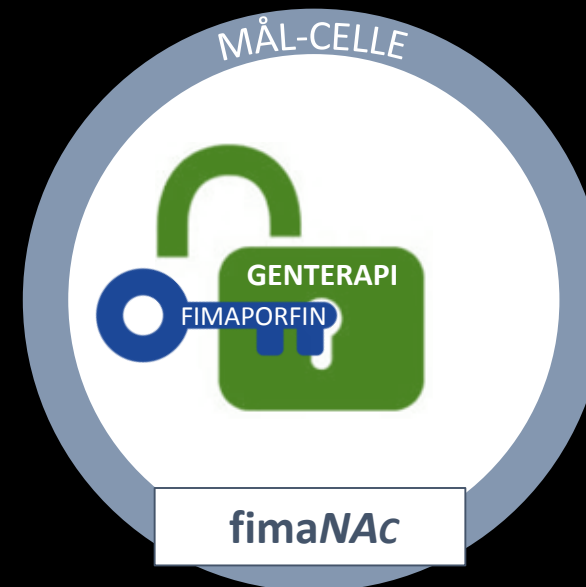
PCI – nøkkelen til effektive medisiner



Gallegangskreft
Stort behov og ingen
godkjente produkter
Registreringsstudie



Sikkerhet og effekt
vist i menneske
Strategisk vurdering
av videre løp

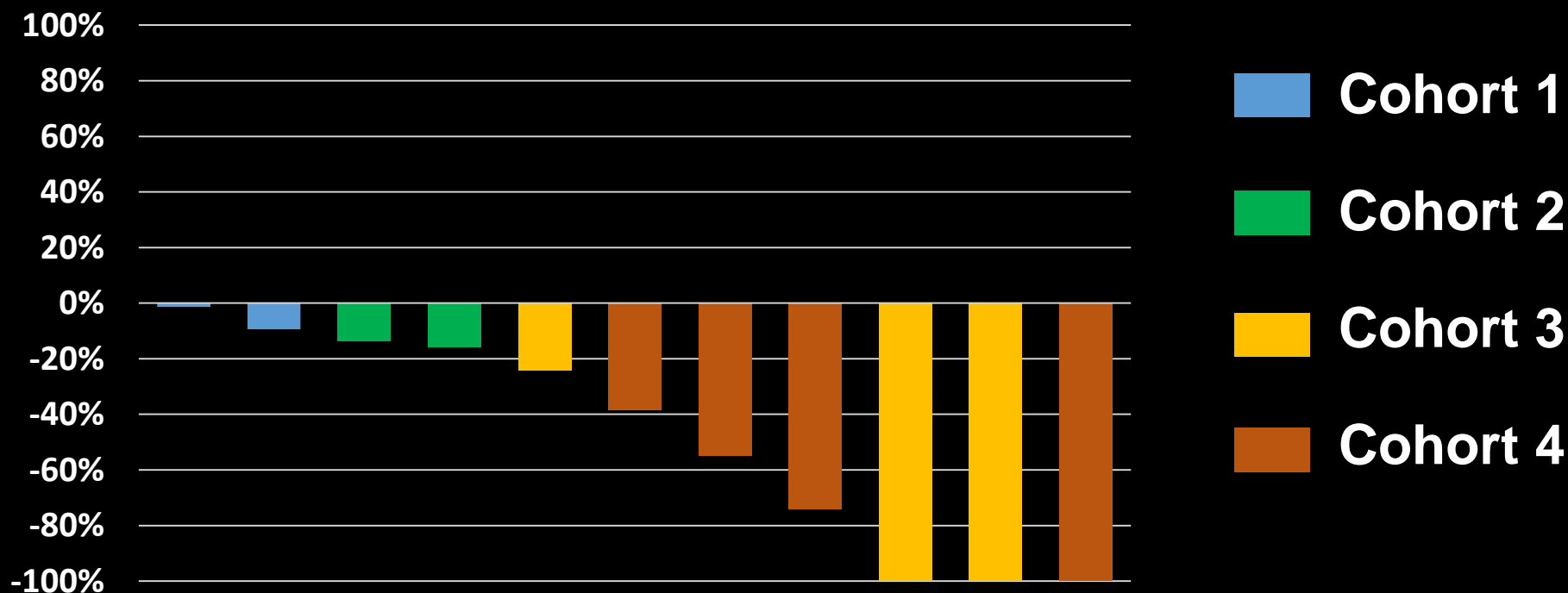


Forsknings samarbeid
med kommersielle
nøkkelaktører



Klinisk studie i gallegangskreft

Prosent forandring total tumorvev

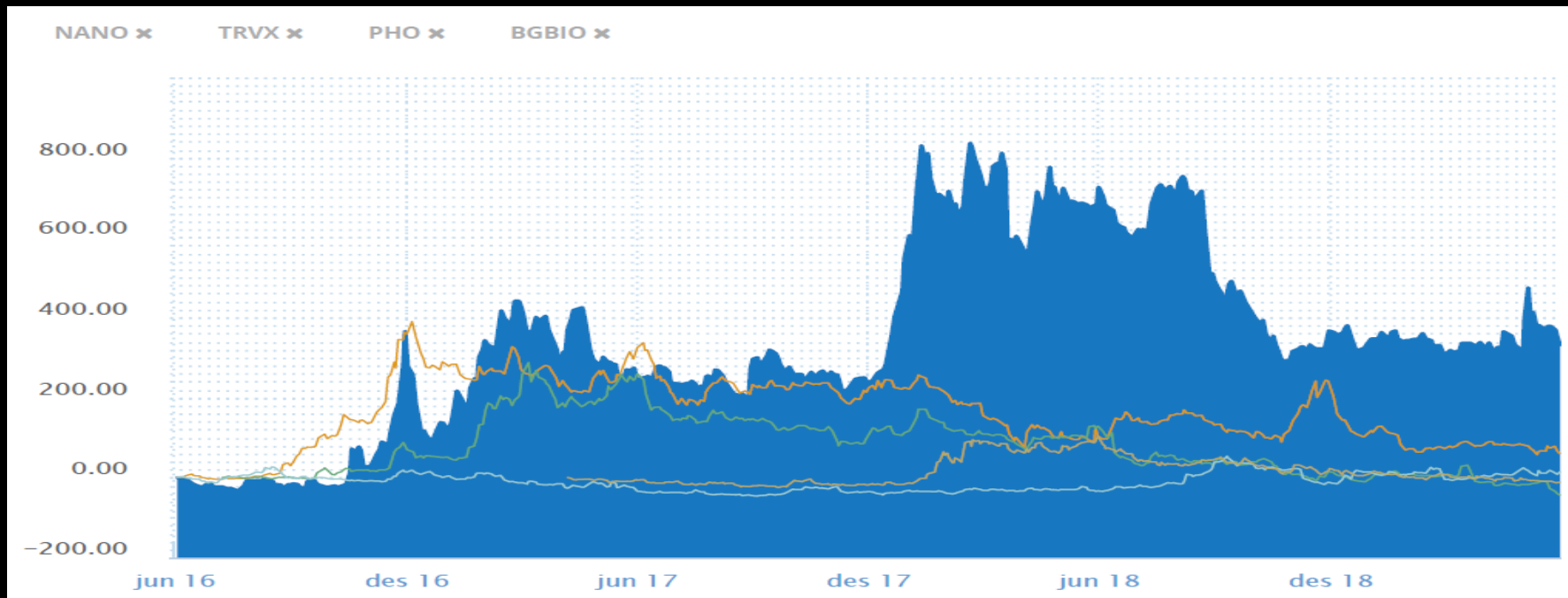


Forventet median overlevelse: 11-12 mnd

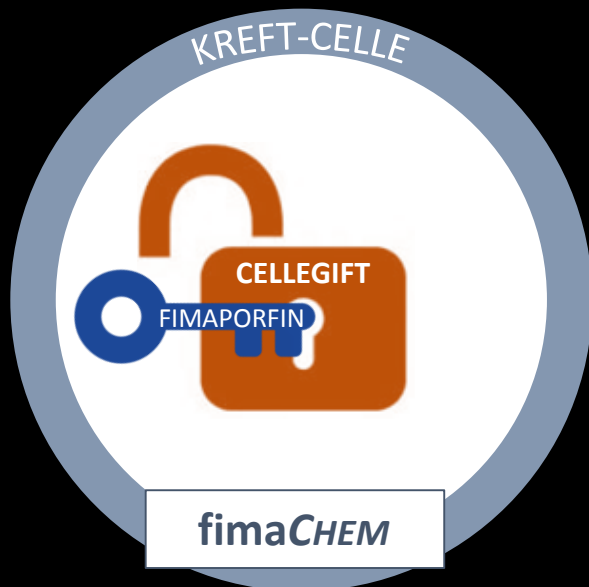
Median overlevelse i Cohort 4: 21,7 mnd

PCI Biotech Holding ASA

- farmasøytisk utviklingselskap
- notert på Axess 2008; overført Oslo Børs 2018 (PCIB)
- markedsverdi \approx 1 mrd; egenkapital \approx 340 mill
- finansiering til første produkt markedsklart
- kursutvikling siste 3 år:



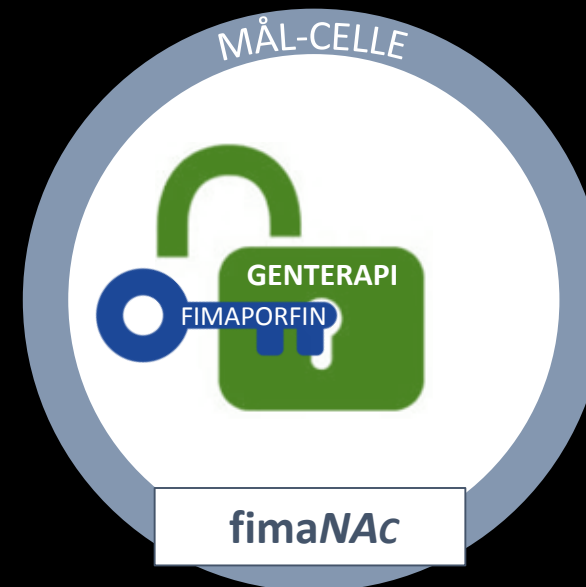
PCIB – verdidrivere



Fremdrift av pågående registreringsstudie mot markedstillatelse



Publisering av kliniske data og videre strategisk utvikling



Utvikling i pågående forskningsamarbeid og nye avtaler

A photograph of a white lighthouse with a glowing light at the top, situated on a dark, forested cliff overlooking a calm sea. The sky is a soft, hazy grey.

Takk for
oppmerksomheten

PCI BIOTECH

► Important notice and disclaimer

This presentation may contain certain forward-looking statements and forecasts based on uncertainty, since they relate to events and depend on circumstances that will occur in the future and which, by their nature, will have an impact on PCI Biotech's business, financial condition and results of operations. The terms "anticipates", "assumes", "believes", "can", "could", "estimates", "expects", "forecasts", "intends", "may", "might", "plans", "should", "projects", "programmes", "will", "would" or, in each case, their negative, or other variations or comparable terminology are used to identify forward-looking statement. There are a number of factors that could cause actual results and developments to differ materially from those expressed or implied in a forward-looking statement or affect the extent to which a particular projection is realised. Factors that could cause these differences include, but are not limited to, implementation of PCI Biotech's strategy and its ability to further grow, risks associated with the development and/or approval of PCI Biotech's products candidates, ongoing clinical trials and expected trial results, the ability to commercialise fimaporfin (Amphinex[®]), technology changes and new products in PCI Biotech's potential market and industry, the ability to develop new products and enhance existing products, the impact of competition, changes in general economy and industry conditions and legislative, regulatory and political factors. No assurance can be given that such expectations will prove to have been correct. PCI Biotech disclaims any obligation to update or revise any forward-looking statements, whether as a result of new information, future events or otherwise.

The reservation is also made that inaccuracies or mistakes may occur in this information given about current status of the Company or its business. Any reliance on the information is at the risk of the reader, and PCI Biotech disclaims any and all liability in this respect.
